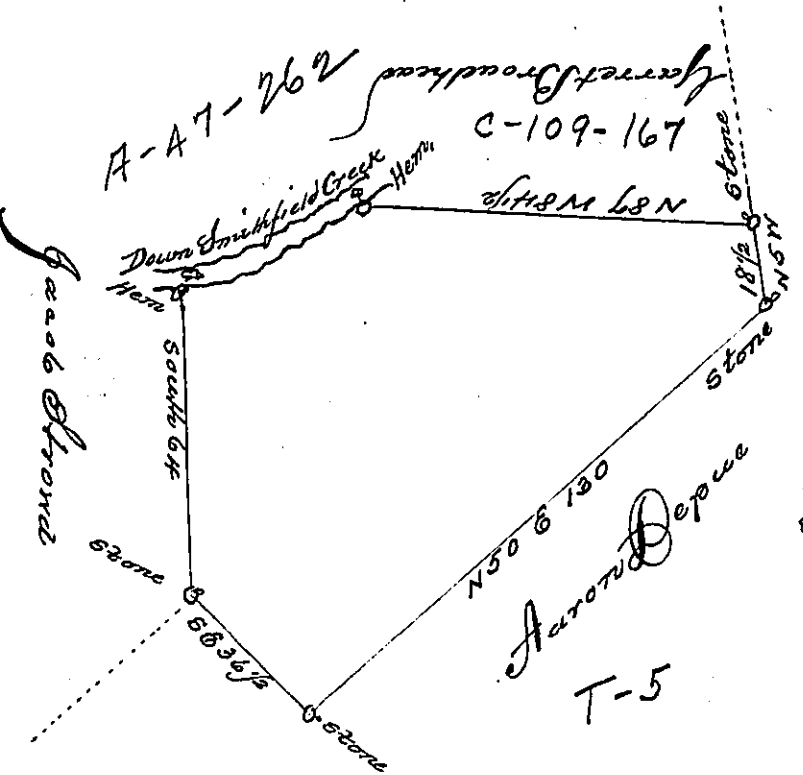


P-7 - 119



The bearings & distances up
 Smithfield creek are
 1. S. 61. W. 31 1/2
 2. S. 84. W. 12
 43 1/2

By Virtue of a Warrant dated the 28th October 1786. Surveyed the 27th November 1786. to Ephraim Bloom the above described Tract of Land situated in Lower Smithfield Township Northampton County, containing Fifty eight acres twenty two perches and the allowance of six ft. Cont. &c.

To John Lukens, Esq.
 Survey General

J. Geo. Palmer

IN TESTIMONY that the above is a copy of the original remaining on file in the Department of Internal Affairs of Pennsylvania, made conformably to an Act of Assembly approved the 16th day of February, 1833, I have hereunto set my Hand and caused the Seal of said Department to be affixed at Harrisburg, this first day of December, 1903,

Isaac P. Brown
 Secretary of Internal Affairs.